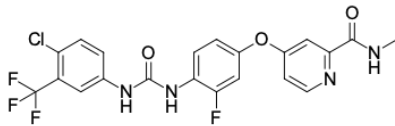


Regorafenib

<http://de.lumiprobe.com/p/regorafenib-755037-03-7>

It is a broad-spectrum multi-kinase inhibitor that blocks several protein kinases involved in key processes of tumor growth. The targets of this agent include KIT, RET, RAF-1, and BRAF kinases (including the mutant BRAF V600E form). It also affects the tumor microenvironment by suppressing PDGFR and FGFR, inhibits angiogenesis by suppressing VEGF receptors (VEGFR1, -2, -3) and TIE2, and can modulate immunity through CSF1R inhibition. Regorafenib is used for the treatment of various solid tumors: in metastatic colorectal cancer patients after prior chemotherapy, in unresectable or metastatic gastrointestinal stromal tumors (GIST) after progression on imatinib and sunitinib, and in hepatocellular carcinoma patients previously treated with sorafenib. In preclinical research, regorafenib is employed to study mechanisms of drug resistance, evaluate synergistic effects in combination with immune checkpoint inhibitors (e.g., in microsatellite-stable colorectal cancer), as well as to investigate the tumor microenvironment and search for predictive biomarkers of therapy response.

This product is intended for research use only.



Struktur von Regorafenib

Allgemeine Eigenschaften

Erscheinungsform:	beiger Feststoff
Molekülmasse:	482.82
CAS-Nummer:	755037-03-7
Molekülformel:	C ₂₁ H ₁₅ ClF ₄ N ₄ O ₃
Löslichkeit:	DMSO
Qualitätskontrolle:	NMR ¹ H und HPLC-MS (≥98 %)
Lagerungsbedingungen:	24 Monate ab dem Wareneingang bei -20 °C an einem lichtgeschützten Ort. Transport: bei Raumtemperatur bis zu drei Wochen. Trocken lagern.
Rechtliche Hinweise:	Nur für Forschungszwecke, wir verkaufen nicht an Patienten, nicht für medizinische Zwecke.