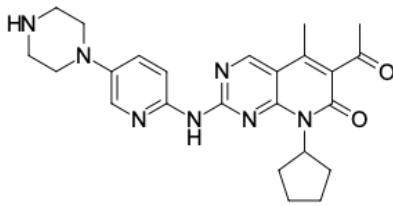


## Palbociclib

<http://de.lumiprobe.com/p/palbociclib-571190-30-2>

Palbociclib is a reversible, highly selective inhibitor of cyclin-dependent kinases 4 and 6 (CDK4/6). The drug is used exclusively in combination with other agents for the treatment of hormone receptor-positive, HER2-negative advanced-stage breast cancer (depending on the line of therapy, it is combined with letrozole, anastrozole, or fulvestrant). As a first-in-class targeted therapy, it was granted FDA approval on February 3, 2015. Palbociclib is also employed in preclinical and clinical research to evaluate its efficacy against other cancer types and to investigate mechanisms of acquired resistance to targeted therapy.

This product is intended for research use only.



**Struktur von Palbociclib**

### Allgemeine Eigenschaften

Erscheinungsform:	gelber Feststoff
Molekülmasse:	447.54
CAS-Nummer:	571190-30-2
Molekülformel:	C <sub>24</sub> H <sub>29</sub> N <sub>7</sub> O <sub>2</sub>
Löslichkeit:	Chloroform, DMSO, Methanol
Qualitätskontrolle:	NMR <sup>1</sup> H und HPLC-MS (≥98 %)
Lagerungsbedingungen:	24 Monate ab dem Wareneingang bei –20 °C an einem lichtgeschützten Ort. Transport: bei Raumtemperatur bis zu drei Wochen. Trocken lagern.
Rechtliche Hinweise:	Nur für Forschungszwecke, wir verkaufen nicht an Patienten, nicht für medizinische Zwecke.